

ECOLUTION

THE ECO-HOME
JOURNAL

Bulletin

ECO-HOME™ NETWORK

AND

THE SAN FERNANDO VALLEY SOLAR AMIGOS

HOMES FOR THE FUTURE TOUR 2005



FALL 2005

HOMES FOR THE FUTURE TOUR 2005

Saturday, October 1
10 am to 4 pm

Three homes, as noted, will
be open on Sunday, Oct. 2nd

Start at any home on the tour, show or
buy your tickets, and visit any you are
interested in.

Tickets

\$15 per person

\$5 for students

\$10 for Eco-Home™ Network members.

Tour coordinators

Ted Baumgart

sfvalley_solar_amigos@hotmail.com

Julia Russell

ecohome@pacbell.net

FORBES FAMILY RESIDENCE

Open Saturday and Sunday

Ivan, Glenn and Elke Forbes

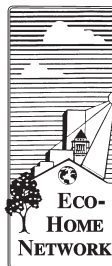
13444 Leach St

Sylmar

Thomas Guide p. 482, C-4

After a devastating fire, the Forbes
family rebuilt their home into a fine
example of sustainable living. Their home
site now includes adventurous technical
pioneering such as a vertical axis windmill
and a large solar array.

A 1400 PV system powers the 110volt
side of the home as a (SAS) Stand Alone
System, while the 42 ft. tall Vertical
Axis Wind Turbine pumps homemade



ECOLUTION BULLETIN

E-co-lu-tion
is derived from ecology,
evolution & solution

Fall 2005

Editor: Julia S. Russell

Proofreader: Jan Hoag

Design/Layout: zerograph.com

© 2005 by Eco-Home™ Network

Ecolution Bulletin is published by

Eco-Home™ Network

4344 Russell Avenue

LA CA 90027

(323)662-5207

ecohome@pacbell.net

<http://www.ecohome.org>

Printed on recycled paper with soy ink.

electricity into the grid all day and night
long (wind permitting).

The wind turbine is the first Co-Gen sys-
tem with the DWP operating since July of
1983. Hot water panels heat all domestic
water including the Spa.

A low maintenance yard and plants also
help the Forbes family to spend more
time in the great outdoors.



Wind Generator

Directions: 210 West, Hubbard St. exit. Turn right on Hubbard St., Turn right on Gladstone Ave., Turn right on Leach St.



Mackey kitchen solar tube

MACKEY RESIDENCE

Open Saturday and Sunday

Ellen, Becky and Alexia Mackey
 8300 Valecrest Drive
 Sun Valley
 Thomas Guide p. 533, B-1

The Mackey home embodies practical and sensible solar energy and other ecological solutions for the real world.

Sustainability for the rest of us — A 1795 sq. ft., 1950s ranch in a suburban setting, the Mackey home is a fine example of a sustainable lifestyle achieved in a modest home.

The site's eco-renovation includes energy efficiency features such as complete insulation, tinted windows, resulting in 50% reduction in the utility bill, tubular skylights, fluorescent light bulbs; recycled-content construction

TABLE OF CONTENTS

Homes for the Future Tour 2005	2
From the Board of Directors	6
Shuttle Around the SM. Mountains	7
From the Founder	8
Are You a BigFoot?	9
Compost Bins Forever	9
Art From Eco-Home	11
Bulletin Board	12
In Memorium	14
Bringing Bio-Diesel to LA	16
Sweet Dreams Become Reality	17
LADWP Back On A Green Track?	19
E-HN Business Network	21
Eco-Home™ Bookstore	23

materials and environmentally friendly products used throughout the interior and exterior.

In 1998 a 2kW PV array (Siemens Trace components) was added, compliments of LADWP, and water-conserving landscaping consisting of a native plant front yard and a backyard orchard and vegetable garden irrigated with a drip system.

Directions: 5 Freeway North from Los Angeles, Hollywood Way exit. Right on N Hollywood Way, Left on Glenoaks Blvd., Right on Roscoe Blvd., Right on Valecrest Drive.

WILLIAMS/BAUMGART RESIDENCE

Saturday only

Ted Baumgart and Kathy Williams
 2425 Mountain Av
 La Crescenta

Thomas Guide p. 534, H-1

The design of the Williams/Baumgart home is, as one admiring wag put it, "Disney meets Gaudi." Ted Baumgart, a concept illustrator/ designer built his 2-1/2 story, 3000 sq. ft, 3 bedroom chalet for his family with 20' high living room-sunspace water wall, passive cooling and heating, recycled steel custom windows, recycled wood floors/ceiling/framing and radiant heated floor. The Sunfrost fridge runs off the 2 kW photovoltaic array and backyard solar



Williams/Baumgart home

power runs the model trains and pump and ionizer for the swimming pool.

Ted used 13,000 local rocks in the home's construction, which, along with the fanciful gargoyles, lend a storybook aura to the place. Drought tolerant landscaping with 120 year old olive trees, irrigated with a graywater system and a massive evergreen sheltering the entrance complete the picture. Ted calls it an experiment in progress, and fantasy fun in a suburban neighborhood.

Directions: 2 Freeway north from Los Angeles exit Foothill Blvd., Left onto Foothill Blvd., Right on Briggs Ave., Left on Mountain Ave.

THE GRODNER HOME

Open Saturday and Sunday

Scott Grodner
6311 Grape Place



Grodner home

Hollywood

Thomas Guide p. 593, F-2

The Grodner home features a very large photovoltaic array, providing power for a large home, rental unit and digital film editing studio. The 1958 stick-and-stucco is typical of homes built during this era, in that it was originally designed and built with no regard for energy conservation, let alone production.

Currently undergoing an extensive remodel, it's a work-in-progress that demonstrates how a solar PV array can be utilized in a less-than-ideal location under challenging conditions and still provide for more than 100% of the total annual electrical usage, including the home-based business.

Directions: Parking on Grape Place is very limited, these directions take you to the alley behind the home where more parking is available.

From the 101, exit at Cahuenga Blvd. Turn NORTH onto Cahuenga (a left if you take the 101 South, a right if you take the 101 North).

- Make your first RIGHT onto Odin St. and go 15 seconds to the bottom of Odin.
- Make a LEFT onto Holly Dr. and go 1 minute to end of the street (at circle).
- Make a SHARP RIGHT onto Deep Dell Pl. and drive for about 30 seconds... you're looking for an ALLEY ENTRANCE on the RIGHT SIDE of

the road during a leftward curve. There's a TELEPHONE POLE with 3 YELLOW STRIPES at the alley entrance. Make a RIGHT into the alley and take it to the end.

6311 is the large green house... the solar panels on the roof will be visible. Feel free to park in or in front of either of the home's driveways and please be careful not to block access for my neighbors. Thanks.

Note: if you miss the alley entrance, don't worry: Deep Dell ends just 30 feet past it at the Weidlake Dr. intersection. If you see a big sign for the "Hollywood Reservoir" the alley entrance is right behind you.

THE SCHNEIDER HOME

Saturday only

Jerry and Gloria Schneider

4113 Sea View Ave

Mt. Washington

Thomas Guide p. 595, A-2

Among the dizzying array of environmental features that must be seen to be believed, the Schneider home includes a fully passive solar design, with solar electric, solar hot water, graywater system and outstanding native plantings.

The southwestern style home, designed by architect Edmund McCormick, is set solidly into a west-facing hillside, its slightly rounded contours blending nicely with the topography and native plant landscape surrounding it. Sandstone rocks from the excavation are used on-site for paving and terracing.

Jerry Schneider is a retired LADWP civil engineer turned Cal Poly Pomona landscape architect graduate. His home and landscape evidence his engineering background, in their many effective systems designed for minimizing environ-

mental impact and maximizing living comfort, and his landscape architecture training, in the aesthetic integration of systems and environmental sensitivity.

Jerry and Gloria's deep commitment to a home in harmony with the earth has found beautiful and moving expression in their Mt. Washington aerie on Sea View Avenue.

Directions: From Glendale: Exit Glendale (2) Freeway at Verdugo Rd. and follow the direction signs toward Eagle Rock Blvd. Turn Left onto Eagle Rock Blvd. and get in the extreme right lane. Turn Right onto El Paso Dr. (traffic light) heading east for about 1 mi. Turn Right onto Cleland Ave. (stop sign) for one short block. Turn Left onto Terrace 49 (stop sign) for one block. Turn Right onto San Rafael Ave. (stop sign) and follow it up on what is known to locals as "the Corkscrew". At the second Stop sign on San Rafael Ave., turn Right onto Sea View Avenue (not the Lane) and go about 1-1/2 blocks to 4113. It's the Santa Fe style on the left (sort of straight ahead) as Sea View Ave turns



Schneider home

FROM THE BOARD OF DIRECTORS

Dear Members,

We were happy to see many of you at our "Tea at Glea's" in June where you met Dr. Elan Melamid and enjoyed Glea Citron's lovely example of "green" comfort and elegance in Culver City. Our hopes were high. We anticipated an exciting future with Dr. Melamid leading the Eco-Home™ Network to new heights.

We regret to report that Dr. Melamid has recently informed the board that he "believes it is important that (he) dedicate (his) energies in another direction."

We are still optimistic about the future of the Eco-Home Network, but due to depleted resources and energies, we need to scale back operations to a few core programs for the immediate future. Founding Director Julia Russell will continue to conduct tours of the Eco-Home™ demonstration home (by appointment on Sundays), and, as you can see from this issue, the Homes for the Future Tour is back! We also have at least one more Member Open House Forum coming up in 2006.

There are ways you, our members, can help. We need your participation. We often remind you to renew your membership, and most of you are good about returning those envelopes - but if you haven't, if your membership has lapsed, we need to hear from you. We'd also like to encourage you to bring in new members (expand our organization) with gift memberships. Besides adding to our coffers, the larger the membership base, the better our chances of getting

any grants we apply for.

And speaking of grants - if any among you are good at and/or willing to write grant proposals, we really need help with that. We also need people to approach potential corporate sponsors and business members. Julia Russell had performed these duties in the past, but her intention to retire (and her grandchildren!) preclude her continuing to single-handedly shoulder this responsibility. There can be any number of people working on this. A team of four or five would be ideal! Grants and corporate sponsorships have been a major source of funding in the past, and if we want the Eco-Home Network to continue and to grow, we have to continue and expand development of this area.

Our Member Open House Forum program, in which someone's environmentally interesting home is opened to members (and guests) for an afternoon of discussion, instruction and idea exchange, is one of our most popular. We need someone to coordinate future Open Houses if this program is to continue. This involves finding appropriate homes, working with the homeowners on their preparation, publicity to our members (and associated groups) and preparing, or otherwise providing, organic food for healthy snacking. It isn't difficult, in fact it can be fun, but it does take some time. Again, this doesn't have to be just one person. (Recruit a friend to help you!)

If you can volunteer in any of these areas, or help during the Homes for the Future Tour, please contact Jan Hoag at (626) 345-9596 [ECOLUTION](mailto:janhoag@earth-</p></div><div data-bbox=)

link.net or Julia Russell at (323) 662-5207 ecohome@pacbell.net.

We realize you received a plea for donations in the spring, and we greatly appreciate all who contributed. Your funds helped us to carry on up to this point.

We know we are very tardy in our thank-you notes to you and please accept our apologies. Our long-time volunteer Membership Chair, Mary Lou Downing, had to resign. We have been very fortunate in finding a new Membership Chair, Beth Mooney, but establishing communication between her computer and the one at Eco-Home has been difficult and still not fully worked out. When it is, thank-yous will be sent to those who so generously responded to Elan's request for support and members who have renewed their memberships.

The Eco-Home™ Network Board of Directors

Larry Byrnes, President

Glea Citron, Secretary

Jan Hoag, Treasurer and Volunteer Coordinator

Joe Feinblatt

Dessa Kaye

Julia Russell

P.S.

Please consider contributing once again, if you can. Your donations will cover essentials such as our rent at the demonstration home, insurance (in case anyone should get injured on a tour, which has never happened), utilities, phone, office supplies, etc. Anyone who donates \$100 or more will receive a copy of our DVD "Going Green - Every Home an Eco-Home" (which was shown at the "Tea at Glea's"). Contributions can be sent to the Eco-Home Network at 4344 Russell Ave., Los Angeles, 90027.

The future of the Eco-Home™ Network depends on funding and member participation. We know we have great members, we've counted on you in the past and you've come through. Now we're counting on you again.

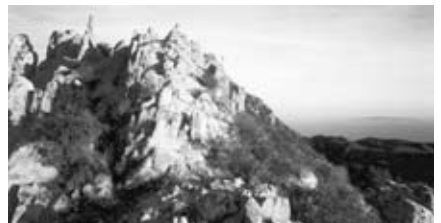
SHUTTLE AROUND THE SANTA MONICA MOUNTAINS

Discover a new way to visit the Santa Monica Mountains National Recreation Area. Enjoy spectacular vistas instead of concentrating on traffic. Have a picnic at the beach without searching for a parking space. Hike or bike one-way on the Backbone Trail and be shuttled back to your car in air-conditioned comfort. Help reduce traffic and pollution in our beautiful parks!

The ParkLINK Shuttle serves visitors in Santa Monica Mountains National Recreation Area. Call 888-734-2323 for information, or check it out at <http://nps.gov/samo/shuttle> or www.parklinkshuttle.com. Shuttles

operate every half hour, 8am-8pm, April-September, weekends and some holidays, in clockwise and counter-clockwise loops, with stops at nine locations. Wheelchair accessible.

Ride the shuttle for \$1 per trip (2005 introductory fare). Children under 5 ride free.



FROM THE FOUNDER

A New Era for Eco-Home Network

We are in an exciting and sometimes confusing time of change. One of the kernels of wisdom I've gleaned from my now almost 70 years of living is that the Tao meanders and persistence counts. Though we might wish and expect the projectory of our advance to a goal will be straight and simple, it rarely, if ever, is. Instead, life and events take a meandering path. With commitment, persistence and as much good cheer as one can muster, one often finally arrives where one intends, or close to it.

As many of you know by now, the Eco-Home™ Network (E-HN) is moving toward a change in leadership. This is a milestone in the history of the Eco-Home™ Network as well as for me personally. As many of you know, the E-HN began in the 70's when my concern for my children's future well being, led me, inescapably, to concern for the future of the entire planet and the whole family of life. It started with one and, over the decades, has grown into a Network of hundreds.

We can be very proud of the contribution we have made to raising consciousness of the connection between our individual choices and actions, our lifestyles, our structures, our infrastructures, the way we inhabit the earth, and the integrity and viability of its life support systems.

It's time for me to pass the mantle of leadership of E-HN onto younger shoulders and for a new era to begin. By filling out and submitting the surveys we sent to our members, many of you have contributed to determining the character and directions the renewed organization will take.

I will continue to live at and lead tours of the Eco-Home™ demonstration home

and produce this newsletter. I'll also continue on the Board of Directors. But, I'm looking forward to handing over the practical running of the organization and the program leadership to others. We will keep you, our members, informed of our progress toward this goal.

In this issue you'll see some signs of change and some of continuity. We're very pleased that The Homes for the Future Tour is once again alive and well, as you can see from our cover story.

Our website is undergoing some updating and upgrading. Our obsolete paper information packets are in the process of being updated and posted on our website. Eileen Hurtt, intern from Antioch University LA, is doing a great job on Water Conservation. They will be posted under the heading "Sustainability How-tos". We're looking for volunteers to do the ones on Composting, Xeriscaping, Organic Gardening and Energy Conservation using Eileen's as a template.

My family has grown by one more grandchild and my late summer garden is overflowing with tomatoes and squash, with a good crop of green peppers and eggplants, too. But no beans! For some reason this year, my beans all withered away after producing an initial sparse crop. Very embarrassing for a demonstration gardener, to say the least!

I've started planting seeds for the winter garden in pony packs: cabbage, broccoli, cauliflower, brussels sprouts, lettuce, spinach along with phlox and snapdragons, my favorite winter flowers.

Catch you on the next meander!

Julia S. Russell

ARE YOU A BIGFOOT?

Not very long ago, if you asked someone "how big is your footprint?" they probably would have looked down at their feet! But things are much more complicated today. As we think about the impact we have on our environment, the size of our ecological footprint doesn't just become harder to figure: it seems to become bigger as you look at it! The concept of an ecological footprint as a measure of our impact on our environment was developed by Redefining Progress in 1999. It's based on their calculations of how many acres it takes to provide each of us with all that we consume and all that we throw away. They have estimated that if the arable land on the planet were evenly divided among all humans today, we would each have 5 acres to use to meet all our needs. As it now stands the average American's footprint is 23.6 acres.

There are many ways we impact the

ecosystem where we live and the degree of that impact determines the size of our ecological footprint. How much water do we use? How much energy do we consume? How many toxic or volatile chemicals do we import or produce or use? How much waste do we generate and where does it go? Our ecological footprint increases or decreases depending on our answers to these questions. Eco-Home™ Network members know how complex is the challenge of understanding these impacts and how much attention it takes to change the size of our ecological footprint. To measure your ecological footprint go to <www.myfootprint.org> and take the quiz.

And then call us at Eco-Home™ Network for help in shrinking your footprint!

Elan Melamid

COMPOST BINS FOREVER

I'm always delighted to welcome to Eco-Home™ groups from the L.A. Conservation Corps (LACC), under the firm and gentle supervision of Tish Tablan and Kathryn Clifton. These are groups of inner city youth participating in a community service, environmental education, and job training program.

The LACC was recently honored with an

award in Urban Stewardship by the L.A.



Decomposing Compost Bins

Environmental Commission for their good work throughout the city: planting trees, cleaning up litter, collecting recyclables, removing graffiti, and restoring parks.

On Tuesday, June 21st, the summer solstice, a vanload of Corps members in their teens and early 20's,

piled out of their van, neatly dressed in their dark green Corps uniforms, and gathered around to hear about Eco-Home™. Before I started to talk about our solar panels, though, Tish said, "Julia, we brought you something today, that I'm pretty sure you can use," and she led me to the back of the van which was opened, and I saw a pile of 12' long recycled plastic lumber!

On an earlier tour, I had apologized for the decomposed condition of the compost bins at Eco-Home™ and explained that I'd been trying, so far unsuccessfully, to get a manufacturer of recycled plastic lumber to donate enough lumber to rebuild them. The beauty of recycled plastic lumber, of course, is that, not only is it a recycled material, but it is non-biodegradable; it won't decompose the way wood does!

And now here, suddenly, was the recycled plastic lumber I had been yearning for: a gift from the L.A. Conservation Corps! My mouth dropped open in amazement. Everyone was standing around with big grins on their faces. I was so moved and grateful my eyes teared up.

Gordon Skates, Principal of Criteria Design, stepped in then with his generous offer to recreate our three bin compost system with the new materials. In Gordon's skilled hands the bins took shape until they finally stood complete, eternal monuments to reuse and recycling in Eco-Home's backyard, better than ever and ready to contain our composting organic waste without ever decomposing themselves!

Forevermore, every time I make a green waste deposit or harvest compost for the garden, I'll remember with gratitude the generous gifts to Eco-Home™ from the L.A. Conservation Corps and Gordon Skates.

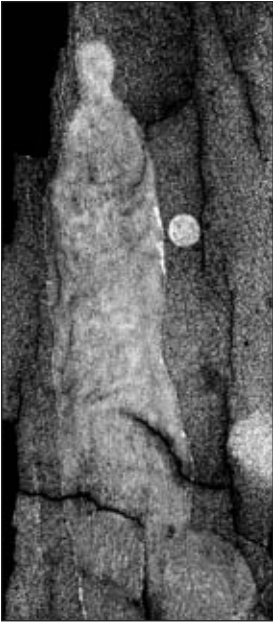
JSR

For more information about the Los Angeles Conservation Corps and their environmental work throughout the community, please visit www.lacorps.org or call (323)526-1460.

Criteria Design belongs to our Eco-Home™ Business Network. See our website, www.ecohome.org



Mission Accomplished!



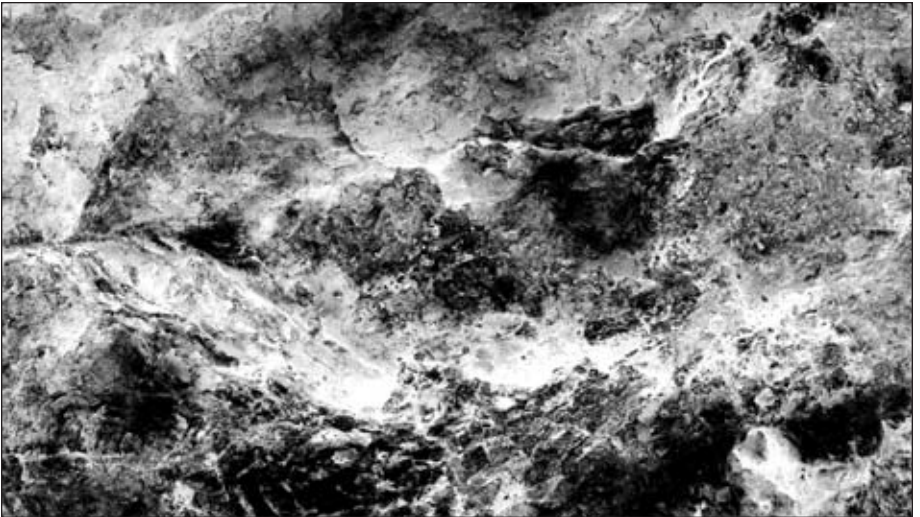
ART FOR ECO-HOME

Add a piece of art to your home and know that one-half your purchase price will be a donation to the Eco-Home Network.

Bob Walter, whose limited-edition archival images are currently represented by three galleries, considers his art to be an extension of the work he began as the first president of the Eco-Home Network.

"My images are made from bits of nature I come across as I walk along the beach or in the mountains. In these tiny objects I am finding hidden worlds. The fire that forged the rock is still in the rock. But so is the surging ocean and mythical figures and vast landscapes. By amplifying and sharing these images I hope I can help people stay in touch with the natural beauty of our

planet that can so easily get lost as we rush through our lives. I believe fostering a deep connection with our Earth is also what lies at the heart of Eco-Home's work." Please visit Bob's website at www.pbase.com/robertwalter to view his work in color. If you are attracted to an image, you can contact Bob at (626) 797-2099 or email: FractDance@aol.com, and he will arrange for you to see his work in person.



BULLETIN BOARD • BULLETIN BOARD

LA REGIONAL EVENTS

OCT. 20

The Architecture of Green Building - Style and Substance

7:00PM - 8:30 PM

Global Green USA

Green building has been growing-in both style and substance-over the past several years. Come to a panel discussion of leading local architects to hear the latest advances in the substance of green building. Case studies of styles in green building will bring the ideas to life.

The presentation is free of charge, however seating is limited, so pre-registration is essential.

To register email gbrcc@globalgreen.org or call (310) 452.7677.

Free Healthy Living Lecture Series by Mary Cordaro

LIVINGGREEN, Culver City

Mary Cordaro, a respected environmental consultant and lecturer, has specialized in creating healthy homes for 15 years, across the country. She has easy solutions to share with you, right now. Mary will deliver a brief lecture, then open the floor to questions. Come and learn about the simple things you can do to make your home a healthy sanctuary.

Oct. 22 - 3:30 p.m. - 4:30 p.m.

Cell phones: what's the real risk? Reducing exposure to harmful radiation from cell phones

Nov. 12 - 3:00 p.m. - 4:00 p.m.

How a healthy bedroom can provide relief from allergies and asthma, naturally (Repeated due to popular demand!)

Contact: (818) 766.1787

CONFERENCES

OCT. 13, 2005

Building Green: 2005 AIA Delaware Statewide Design Convention

Wilmington, Del

Architectural convention for the Delaware region.

Contact: Ann Stacy

Delaware Chapter of the American Institute of Architects

302-654-9817

<http://www.aiadelaware.org/awards05/building-green.htm>

OCT. 14-16, 2005

Bioneers Conference 2005

San Rafael, Calif.

Conference on practical, nature-based solutions to restore the Earth.

Contact: Nina Simons

Collective Heritage Institute

877-246-6337

<http://www.bioneers.org/conference/>

OCT. 17-18, 2005

Renewable Energy in America: Policies for Phase II

Washington, DC

Conference on public policymaking related to the implementation of renewable energy technologies.

Contact: Tom Weirich

American Council on Renewable Energy

202-429-2037

<http://www.acore.org/05policy.php>

OCT. 17-19, 2005

Buildings Executive Summit: Best Practices in Sustainability

La Jolla, Calif.

An executive conference focused on real-world approaches to sustainability in the commercial building industry.

Contact: John Hendel

Stamats Business Media Live Events

952-224-8540

<http://www.buildings.com/sbmlive/EventLandingExecSummit.aspx?leid=10>

OCT. 18-19, 2005

Green Retrofit Strategies Summit

Toronto, Ontario, Canada

Canadian summit focused on making building performance improvement retrofits profitable.

Contact: Amanda Ono

Strategy Institute

416-944-9200

http://www.strategyinstitute.com/101805_green_retrofit/dsp_green_retrofit.php

OCT. 19, 2005

Sustainability and Energy Efficiency Leadership Conference

Oconomowoc, Wis.

Conference promoting the advance of sustainability and energy efficiency in the construction industry.

Contact: Constance Lindholm

Wisconsin Green Building Alliance

414-224-9422

http://www.wgba.org/artman/publish/cat_index_10.shtml

BULLETIN BOARD • BULLETIN BOARD

OCT. 20, 2005

Green Materials Showcase 2005

San Francisco, Calif.

Eighth annual green building trade show for the San Francisco Bay area.

Contact: Greg VanMechelen

Architects Designers Planners for Social Responsibility

510-558-1075

<http://www.gms2005.org>

NOV. 4, 2005

Green Building Workshop Series: Towards Zero Net Energy Homes

Brattleboro, Vt.

One-day workshop on planning and designing zero energy homes.

Contact: Keith Dewey

Vermont Green Building Network

802-824-5612

<http://nh.gov/oep/events/documents/greenbuildingworkshopseries.pdf>

NOV. 6-8, 2005

Building Materials Reuse and Recycling: Decon '05 Conference

Atlanta, Ga.

Conference focusing on deconstruction, building materials reuse, and the recycling of construction and demolition wastes.

Contact: Brad Guy

Building Materials Reuse Association

814-571-8659

<http://www.decon05.com/>

NOV. 9-11, 2005

Greenbuild International Conference & Expo 2005

Atlanta, Ga.

The pre-eminent showcase for leading-edge green technologies in the building industry.

Contact: Conference Coordinator

(info@usgbc.org)

U.S. Green Building Council

<http://www.greenbuildexpo.org>

DEC. 6-8, 2005

Asia Biofuels Conference & Expo III

Manila, Philippines

Conference highlighting the expanding global bio-fuels industry, with a focus on Asia.

Contact: Wendy Vincent

The Stratton Group, Inc.

605-338-6829

<http://www.asiabiofuels.com/index.cfm>

DEC. 8, 2005

Green Building Workshop Series: Towards Zero Net Energy Homes

Barre, Vt.

One-day workshop on planning and designing zero energy homes.

Contact: Keith Dewey

Vermont Green Building Network

802-824-5612

<http://nh.gov/oep/events/documents/greenbuildingworkshopseries.pdf>

DEC. 13-16, 2005

Ecobuild Federal

Washington, DC

Conference emphasizing integrated sustainable design with a special focus on governmental facilities.

Contact: Sustainable Buildings Industry Council

800-996-3863

<http://www.ecobuildamerica.com>

JAN. 12-14, 2006

National Symposium: Indoor Air Quality Tools for Schools

Washington, DC

Sixth annual event with specific focus on indoor air quality in schools.

Contact: Jamie Simpson

U.S. Environmental Protection Agency

703-247-6194

<http://www.iaqsymposium.com/>

JAN. 26-28, 2006

5th Annual New Partners for Smart Growth Conference: Building Safe, Healthy and Livable Communities

Denver, CO

A national multi-disciplinary smart growth conference sponsored by the Local Government Commission and the University of Pennsylvania.

Contact: Michele Kelso Warren (916) 448-1198,

mkwarren@lgc.org www.newpartners.org

For a more complete listing of conferences, workshops and courses on sustainability, visit www.ecohome.org and click on Bulletin Board.

Many of the entries in this listing are reprinted with permission of Building Green, Inc., ebn@BuildingGreen.com or www.BuildingGreen.com

IN MEMORIAM

In May of this year, Harry Jordan, architect, passed away from this plane of existence.

Harry designed and lived his life in a principled way. He was an architect whose designs and buildings incorporated green materials and systems starting way back in the 70's and 80's, before the green building movement had really coalesced.

He was a successful architect. His income from the practice of his profession was sufficient to allow for the development of a unique lifestyle. Harry outfitted a VW van for temporary living and a trailer with an entire woodworking and metal working workshop. For six months of the year Harry worked for pay, and the other six months he traveled to different nonprofit organizations throughout California to offer his architectural and construction services pro bono to those he had chosen to serve. He'd park his van and trailer workshop at a site and live and work there for as long as was needed to complete the project.

It was one of the highlights of Eco-Home Network's history when Harry's van and trailer pulled up to the curb at 4344 Russell Avenue to lend us a hand. We needed an office space and had a garage in the backyard that wasn't used for a car. As the architect and project manager, Harry played a pivotal role in the green renovation of Eco-Home's garage into our office, meeting room, library, bookstore and passive solar space heating demonstration.

In his knowledgeable, professional, yet cheerful, good natured manner, Harry directed a team of volunteer

Eco-Home Network members for a period of several weeks as the garage structure was straightened, reinforced, and insulated, desks and bookcases built and installed, and new windows installed. He oversaw and often personally attended to all the hundreds of details of making the rickety old garage into a safe, comfortable and attractive multi-use facility!

Los Angeles Eco-Village was another nonprofit recipient of Harry's beneficence. Lois Arkin, founder of the LA Eco-Village, writes: "Harry played a very important role here as well, giving the idea of an ecovillage major credibility through his development of the original feasibility study and 3-D model of a proposed Eco-Village development on an old landfill, along with a set of mounted graphics that we displayed at various events. I refer to Harry frequently in our public tours."

All this he did without pay. He considered his pro bono work a service of gratitude for the work of the nonprofits he admired. Harry continued to be a personal friend and a friend of the Eco-Home Network for the rest of his life.

Among the many admirable qualities he possessed, his skill in respectful, informed, thoughtful and fun conversation was one I particularly enjoyed. It was always a special event when Harry showed up on his motorcycle, as he did several times a year after moving to Arizona. I always found some way to drop what I was doing to hear about his latest ventures and adventures and enjoy hours of stimulating conversation.

After he was diagnosed with colon cancer last fall, we spoke regularly by phone and enjoyed some of the best communication we've ever had on life and death. The diagnosis was a shock. He wasn't expecting or ready to die at that point. He decided not to go the allopathic route of chemo and radiation, but started taking an American Indian remedy that he'd learned about.

Our conversations continued and when the remedy he had chosen didn't seem to be effective he decided he would just let nature take its course. He reflected that he had had an extraordinarily rich, interesting, exciting, fun and rewarding life. He was deeply grateful for all he had received and

given in life and didn't feel the need to hang on any longer.

The last message I received from Harry was a generous donation to Eco-Home™ Network, with a simple note, "For your retirement. Enjoy!"

The lifestyle Harry Jordan adopted of devoting at least half of his working life to contribute to the betterment of the world he loved so much is a model of personal social responsibility to inspire us all. .

Thank you, Harry.

Julia S. Russell
Founder, Eco-Home™ Network



BRINGING BIO-DEISEL TO L.A.

Bio-diesel is a cleaner-burning diesel fuel made from natural, renewable sources such as vegetable oils. A small but growing group of vehicle owners are making small modifications to their diesel vehicles to allow them to use blends of this fuel in their cars, ranging from fuel that is 5 percent to 99.9 percent Bio-Diesel. Adopting this technology has been slowed by many factors, including lack of awareness, perceived complexity of converting vehicles, continuing concerns about environmental impacts of particulate emissions even from "clean" diesel, and generally yucky perceptions of how messy and smelly diesel gas is.

But for those who have decided to make the switch to this fuel source, nothing dominates conversation more than the challenge of finding fuel for your car! From Santa Barbara to San Diego, drivers can count the number of stations offering Bio-Diesel blends on just one hand. And still have a finger free to send a message to your favorite big oil company, if you know what I mean.

Eric Cadora and Colette Brookes have created BioBling.com to improve awareness of and access to Bio-Diesel in L.A. At a recent meeting, discussion focused on both immediate solutions, like buying a 2000 gallon tank so that members can find fuel closer to LA, to longer term approaches to creating and supporting "green" fueling stations. If you are interested in learning more about this work, check out their website!

Something that excites many people about bio-diesel is that it can be home brewed using used cooking oil that local restaurants are happy to donate! There is a lot of excellent information on the internet that is very helpful when starting your own backyard bio-diesel brewing lab. But before doing it yourself, you need to do some extensive research or, best of all, take a workshop in your local area. Path to Freedom in Pasadena gives bio-diesel brewing workshops. Their website is <pathtofreedom.com> and their phone # is (626)795.8400.

Elan Melamid, Ph.D.



SWEET DREAMS BECOME REALITY

My bed has long been a monument to reuse.

I first saw my bed frame on the curb across the street from Eco-Home™ Network Board Secretary Glenna Citron's home. It was disassembled but seemed to have all the necessary pieces when I examined the pile. It was a nice, solid blond wood. The design was simple. Just what I needed. Glenna graciously offered to keep the bed frame in her garage until I could pick it up.

I'd been sleeping on a foundation, and mattress on the floor for years which was OK, but rather low to the ground, involving deep knee bending for bed making. The bed frame raised it up to a more comfortable height.

The twin foundation had appeared on the curb next door to Eco-Home™ about 10 years prior. I adopted it because I knew the people next door and knew they were clean and healthy, and it was an upgrade from the foam mattress on the floor that I was sleeping on.

It served me well, although there was a decided hammocky slump to it, in spite of the board I slipped under the mattress to offset it. And I was aware that, though it didn't have metal springs, it had a metal web in it and was made of synthetic materials, except for the wood in the foundation. Mary Cordaro, founder of H3Environmental, has educated me about the undesirable effects of metal and synthetic materials on our bodies, especially in our beds and bedrooms, where we rest and our bodies regenerate.

So, ever since I started reading about

and seeing the all-natural latex, organic cotton and PureGrow Wool™ beds that have come on the market, and that Mary displays in her H3Environmental showroom near Studio City and the new Livingreen store in Culver City, I've yearned to upgrade to something that I knew would provide optimum health benefit to me while I slept. But these beds are not yet common enough to be affordable for someone in my income bracket. I've been saving up for one of these marvelous beds from "The Mary Cordaro Collection", but somehow, my stash periodically contracted and/or disappeared before I amassed enough to actually complete the transaction.

On the afternoon of June 25th, I heard the hearty "Hellooooo!" of Ted Baumgart as he strode down the driveway to my office. "I'm here! It's here!" he chortled. I dashed out to see his van, back doors opened to reveal a bed: the bed of my dreams! A firm, all natural latex mattress with solid wood foundation (looks like a box spring, but without the springs) and a softer latex "topper", each piece quilted in organic cotton and PureGrow Wool™ batting and organic cotton fabric, all made to Mary's specifications. It glowed in the dark interior of the van with the soft luminescence of organic, unbleached cotton.

This was a gift from Mary Cordaro, picked up at the Livingreen store in Santa Barbara and delivered to me by Ted. Mary had let me know that she had sent all the materials to be scrupulously tested by a specialized laboratory in Germany. I was spellbound by the sight of this astounding gift, but I also



wanted to get it into my bedroom as soon as possible. I'd removed the old wood foundation and mattress and vacuumed that morning in anticipation of its arrival. Ted and I made a good team. We had it in place in my reused twin bed frame in no time.

Ted tried it out before he left and gave it his seal of approval. I quickly made it up with my favorite sheets, including an organic cotton sheet I bought from Mary years ago.

It looked so inviting, but I made myself have dinner and enjoyed a long, relaxing bath before finally allowing myself to climb into my new bed at 8:00 PM. Oh, what total relaxation I felt, just stretched out flat, with my little neck pillow under my neck. I luxuriated in it until I soon fell asleep.

For several years, my body has felt heavy as lead when I arise in the morning and clump into the bathroom, taking 10 minutes or so to limber up and light-

en up. But this morning it was different. I awoke with the alarm at 6 AM and arose with a feeling of lightness already streaming through my body! My bed is no longer a monument to reuse, but to rejuvenation!

I'm continuing to notice additional health and comfort benefits the longer I sleep on this wonderful bed. No words are adequate to

express the deep gratitude I feel to Mary for this inestimable gift to my well-being! I pray that all human beings may someday sleep in peace and health on beds that support their well-being.

Only twenty-five years ago, the idea that green building standards would become prevalent seemed a farfetched dream. Now we are seeing that actually taking place. Some day, I believe, we'll see widespread awareness of the need for healthful bed and bedroom environments and see standards of healthfulness set for them. Mary Cordaro and her company, H3Environmental, will have played a key role in bringing that about.

Thank you, Mary.

Julia S. Russell

For more information on H3Environmental and The Mary Cordaro Collection www.h3environmental.com

LADWP BACK ON A GREEN TRACK?

Newly elected Mayor Antonio Villaraigosa used the occasion of the announcement of his new appointees to the Los Angeles Department of Water and Power's (LADWP's) Board of Commissioners to give a rousing speech at the Griffith Park Nursery on Monday, Aug. 15, at 9:30 A.M., in the midst of working members of the Los Angeles Conservation Corps as they were tending the Nursery's trees.

Villaraigosa, enshrined in a leafy background and standing literally in the Nursery, was surrounded by his five (5) appointees: Mary Nichols, Bill Burke, accompanied by his wife, LA County Supervisor Yvonne Braithwaite Burke, David Nahai, Nick Patsouras, and Edith Ramirez.

This setting was symbolic of the Mayor's commitment to a new, more environmentally responsible and responsive direction for LADWP and was enhanced by the presence on the podium of leaders of long-standing L.A. environmental groups such as Andy Lipkis of Tree-People, Julia Russell of Eco-Home™ Network, Frances Spivy-Weber of the Mono Lake Committee, and representatives from the Sierra Club, Center for Energy Efficiency and Renewable Technologies (CEERT), and others.

Villaraigosa's Vision

The Mayor began by emphasizing that the LADWP would be streamlined to work more efficiently but moved quickly on to asserting that he would work with the Commission to make the LADWP more responsive to environmental concerns, expanding existing programs, like the "cool schools" and committed to planting 1 million new trees in L.A.

through their "Trees For A Green L.A." program.

The Mayor also urged the LADWP to move away from coal to "green" power, clean up existing natural gas power plants in the L.A. basin, increase solar rebates and new "green" building initiatives and aim for 20% renewable energy by 2010. The Mayor's new appointees seem well chosen to help implement his hopeful, environmentally and economically intelligent vision.

The all-powerful post of President of the Board goes to the well-credentialed Mary Nichols, who served as West Coast Director of the Natural Resources Defense Council and Director of the Santa Monica-based Environment Now as well as Secretary for Environmental Affairs under former Governor Jerry Brown. In the 1990s, Ms. Nichols served as Assistant Administrator of the U.S. Environmental Protection Agency under President Clinton. More recently, Mary was Secretary of Resources for the State of California. She returned to L.A. in 2004 to preside as Director of the UCLA Institute of the Environment and teach environmental law at that institution.

Other new Board members include:

Bill Burke, Chair of the South Coast Air Quality Management District and member of the California Coastal Commission. He has served two terms as President of both the California Fish and Game Commission and the Wildlife Conservation Board. It should be noted here that while serving on the California Air Resources Board in 2003, he voted to kill the ZEV mandate so Mr. Burke's position on environmental issues

is not necessarily predictable.

David Nahai, from the L.A. Regional Water Quality Control Board, the industrial water supply organization charged with enforcement of the Clean Water Act, is also Chair of the Santa Monica Bay Restoration Commission and is associated with the present Governor's "Environmental Task Force". In 2003, Mr. Nahai received the Environmental Champion Award from the League of Conservation Voters. It seems likely that Mr. Nahai will be a backer of solar power, more transparent government and may be a good liaison with state organizations and politicians.

Edith Ramirez is a partner with the law firm of Quinn Emanuel Urquhart Oliver & Hedges, LLP and is associated with L.A. Center for Law and Justice. Ms. Ramirez graduated from Harvard-Radcliffe College in 1989 and obtained her law degree from Harvard Law School in 1992. Appearing earnest, humble and intelligent, Ms. Ramirez seems likely to promote greater consultation with the citizens of L.A. on issues of environmental justice.

Nick Patsouras is a Professional Engineer (PE) and president of Polis Builders, developer of mixed-use residential projects around transit centers. As a P.E., Mr. Patsouras is very concerned with efficiency and eliminating waste.

The new Board should be 3 to 2, or more, in favor of clearing the solar rebate backlog, issuing solar reservations, and re-opening reservations this year, instead of 2006 as currently planned.

You are urged to attend LADWP Commission meetings the first and third Tuesday of every month, especially after the new Commissioners are inducted. The Board meetings are held at 1:30 P.M. on the 15th floor of the John Ferraro Building in Room 1555-H, at 111

North Hope Street, Los Angeles, CA 90012. Play a role in helping Mayor Villaraigosa and his hand-picked Commissioners take Los Angeles into a green future!

At the latest meeting on Aug. 16, two "public comment" speakers called for an end to the chaos in the LADWP solar program, cited specific examples of LADWP's making it difficult to install solar, and made the following four suggestions for future direction:

1. Neighborhood Councils as the Basis of All Policy Decisions

- a. On rates, and funding, since the people pay, they should have a voice in all negotiations, from the start.
- b. On energy efficiency, including green schools, insulation, energy-efficient appliances, source separation of trash and recycleables, community composting at schools, and many other leadership positions, that LADWP "Green-LA" can help on with its corps of volunteers and paid interns.
- c. On details of the solar program, which are now shrouded in secrecy and "sweetheart" deals.
- d. Visibility in LADWP solar jobs, which soak up half the dollars, would benefit resident ratepayers.
- e. On rebates, in the last 15 months, only 44 jobs were approved. Of that, 94.5% of the money went to 11 big jobs while hundreds of resident ratepayers waited in vain for LADWP to assist them with solar.
- f. On Disaster Plans, solar powered houses can be "islands of recovery". Solar should be the backup for all LED light bulbs (L.A. has not yet gone entirely to energy efficient street lighting and traffic signals).

2. CREDO: NEVER TURN AWAY A SOLAR CUSTOMER WHO IS WILL-

ING TO PUT UP THEIR OWN MONEY TO INSTALL SOLAR POWER ON THEIR ROOF. This past history was a disgrace and a desertion by LADWP of its resident ratepayers.

3. SOLAR INDUSTRY: In the midst of a worldwide shortage of solar panels, we have not promoted factories (called "furnaces") to build solar panels. We invented this technology, but then abandoned it to Japanese and European companies who improved it, and now they own it. LADWP must take a leadership role in developing a solar manufacturing and exporting industry. The worldwide shortage will last for decades as alter-

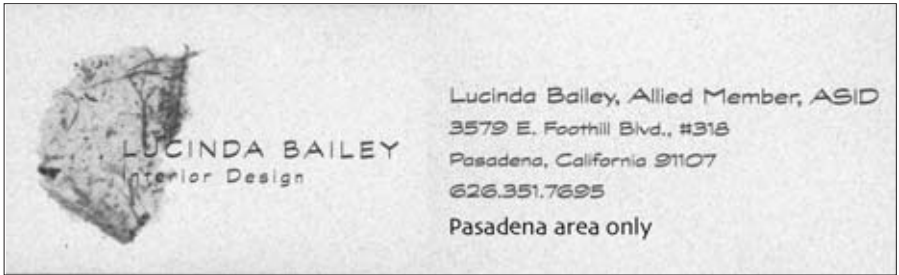
natives to dirty new coal and nuclear power plants are sought.

4. ELECTRIC CAR SUPPORT: LADWP was among the leaders in supporting electric full-function cars, like the RAV4-EV. LADWP should continue and expand this support, and also copy Anaheim's "electric station car" program to let commuters drive in a small EV from the train station to their jobs.

Doug Korthof

email doug@seal-beach.org

E-HN BUSINESS NETWORK



LUCINDA BAILEY
Interior Design

Lucinda Bailey, Allied Member, ASID
3579 E. Foothill Blvd., #318
Pasadena, California 91107
626.351.7695
Pasadena area only



Harry J. Williams
Lumber Co.
Established 1956
• FSC Certified •

Serving Contractors in Southern California
Commercial • Industrial • Residential • Government

Environmental Home Improvement

LARRY BYRNES

"Building Better Places To Live"

Healthy Construction Specialist
B.A. Chemistry
Cont. Lic. #B695275

6440 Bellaire Ave.
N. Hollywood, CA 91606
818-508-1415



Duvivier
architects

Isabelle Duvivier
308 Westminster Avenue
Venice, CA 90291
310-399-4944
www.idarchitect.com



JAMES L. HEIMLER, A.I.A.
(818) 343-5393
FAX (818) 343-5815

JAMES HEIMLER, ARCHITECT, INC.
LEED ACCREDITED PROFESSIONAL - SUSTAINABLE DESIGN
RESIDENTIAL & COMMERCIAL

19510 Ventura Blvd., Ste. 210 e-mail: jhai@earthlink.net
Tarzana, CA 91356 www.jhai-architect.com



INTEX SOLUTIONS INC.
A responsible company providing commercial carpet, one of a kind care

DAVID ROSENSTEIN
President

Direct 323.720.3160 x115
Toll Free 800.525.4494
Cell 323.855.8106
Fax 323.720.3175

507 W. Washington Boulevard • Menlo Park, California 90640
www.intexsolutions.com • drosenstein@intexsolutions.com



7824 Zombar Avenue • Van Nuys, CA 91406
(818) 904-3200

Lic. #539679

NONTOXIC
AND
ORGANIC

Earth Friendly
INTERIOR DESIGN

SUITE
BABY
—organic
nursery

Licensed
Builder

Insured
Member BBB

Alison K. Pollack, allied ASID

2244 Marlin Place West Hills CA 91307

ph & fx: 818.888.6250 800.770.6250 earthfriendlyinteriordesign.com



GREEN BUILT CONSULTANTS

Ricky Cappe

2444 Hill Street, Santa Monica California 90405 310-349-3266 greenbuiltconsultants.com

C & K Landscape Design

DESIGN • INSTALLATION • MAINTENANCE

State & Regional
Award Winner

Featured on HGTV's
"Designing for the Sexes"
& "Designers Challenge"



818-353-7030

Featured on National
Garden Conservancy
Tour & Eco Home Tour

Gold winner for
Design Excellence Award

"CREATIVE DESIGN SOLUTIONS FOR CHALLENGING SPACES"

- Water Saving Sprinkler Systems
- Low Voltage Lighting
- All Garden Styles
- California Native/Drought Tolerant
- Organic Pest Control
- Custom Fencing
- Custom Patios, Decks & Driveway
- Recirculating Water Features
- Biological Ponds

www.candklandscapedesign.com

ECO-HOME™ BOOKSTORE

A HOUSE OF STRAW: A Natural Building Odyssey, by Carolyn Roberts, Chelsea Green, 2002, \$20.94

A PRIMER ON SUSTAINABLE BUILDING, by Barnett and Browning, Rocky Mtn. Institute, 1999, \$19.82

ACHIEVING ECO-NOMIC SECURITY ON SPACE-SHIP EARTH, by Jim Bell, 1994, \$17.54

ALL ABOUT LANDSCAPING, Ortho Books, 1988, \$11.72

BACKYARD COMPOSTING, by John Roulac, \$8.27

BUILDER'S GREYWATER GUIDE: The Guide to Professional Installation of Greywater Systems, by Art Ludwig, 1995, \$18.60

BRANCHED DRAIN GREYWATER SYSTEMS, by Art Ludwig, 2003, \$18.60

CHOOSE TO REUSE, An Encyclopedia of Services, Products, Programs & Charitable Organizations That Foster Reuse, by Nikki and David Goldbeck, 1995, \$18.54

EARTH USER'S GUIDE TO PERMACULTURE, by Rosemary Morrow, 1999, \$16.02

ECO-RENOVATION: The Ecological Home Improvement Guide, Edward Hartland, 1994, \$19.00

GAIA: A NEW LOOK AT LIFE ON EARTH, James Lovelock, 2000, \$18.06

GAIA'S GARDEN, A Guide to Home-Scale Permaculture, by Toby Hemenway, 2001, \$27.53

GAVIOTAS: A Village to Reinvent the World, by Alan Weisman, 1995, \$25.60, hardcover

SALE! GUIDE TO RESOURCE EFFICIENT BUILDING ELEMENTS, 4th Edition, Center for Resourceful Building Technology, 1994, \$7.00

HEALTHFUL HOUSES, How to Design and Build Your Own, by Clint Good, \$13.14

HEALTHY HOUSE BUILDING FOR THE NEW MILLENNIUM: A Design and Construction Guide, by John Bower, 2001, \$24.38

HOW TO GROW MORE VEGETABLES than you ever thought possible on less land than you can imagine, by John Jeavons, 1991, \$16.57

HUMANURE HANDBOOK, A Guide to Composting Human Manure, by Joseph Jenkins, 1999, \$21.80.

LOS ANGELES: History of the Future, by Paul Glover, 1989, \$5.00

NATURAL PEST CONTROL: Alternatives to Chemicals for the Home & Garden, Revised Edition, by Andrew Lopez, 1994, \$20.44

PERELANDRA GARDEN WORKBOOK, 2nd Edition, by M. Wright, 1993, \$22.44

REGENERATIVE DESIGN FOR SUSTAINABLE DEVELOPMENT, by John Tillman Lyle, 1994, \$37.10

SALE! STATE OF THE WORLD, 1995, Worldwatch Institute Report on Progress Toward a Sustainable Society, \$8.00

SALE! STATE OF THE WORLD, 1996, Worldwatch Institute Report on Progress Toward a Sustainable Society, \$8.00

SALE! STATE OF THE WORLD, 1999, Worldwatch Institute Report on Progress Toward a Sustainable Society, \$8.00

SALE! STATE OF THE WORLD, 2001, Worldwatch Institute Report on Progress Toward a Sustainable Society, \$8.00

SALE! STATE OF THE WORLD, 2003, Worldwatch Institute Report on Progress Toward a Sustainable Society, \$8.00

SUSTAINABLE CITIES: Concepts and Strategies for Eco-City Development, Edited by Walter, Arkin & Crenshaw, 1991, \$22.99

THE ECOLOGY OF COMMERCE, A Declaration of Sustainability, by Paul Hawken, 1993, \$17.00

THE FUEL SAVERS, Solar Ideas for Your Home, Edited by Bruce N. Anderson, \$6.32

THE HAND-SCULPTED HOUSE: A Practical & Philosophical Guide to Building a Cob Cottage, by Ianto Evans, Michael Smith & Linda Smiley, Chelsea Green, 2002, \$38.02

THE NEW STRAWBALE HOME by Catherine Wanek, Gibbs Smith Pub., 2003, \$42.95

THE NEXT AMERICAN METROPOLIS, Ecology, Community, and the American Dream, by Peter Calthorpe, 1993, \$25.81

THE PASSIVE SOLAR HOUSE BOOK, Using Solar Design to Heat and Cool Your House, by James Kachadorian, 1997, \$27.52

THE RESTORATION ECONOMY: The Greatest New Growth Frontier, by Storm Cunningham, 2002, \$33.11

THE SMART KITCHEN: How to Design a Comfortable, Safe, Energy Efficient & Environment-Friendly Work Space, by David Goldbeck, 1994, \$17.

TREEHOUSES: The House that Jack Built, by David Pearson, 2001, \$19.82

Prices quoted include the 10% members' discount plus tax, shipping and handling. To order send a check to the Eco-Home™ Network in the amount indicated above.

ECO HOME™ NETWORK

4344 RUSSELL AVE

LOS ANGELES, CA 90027

ADDRESS CORRECTION REQUESTED